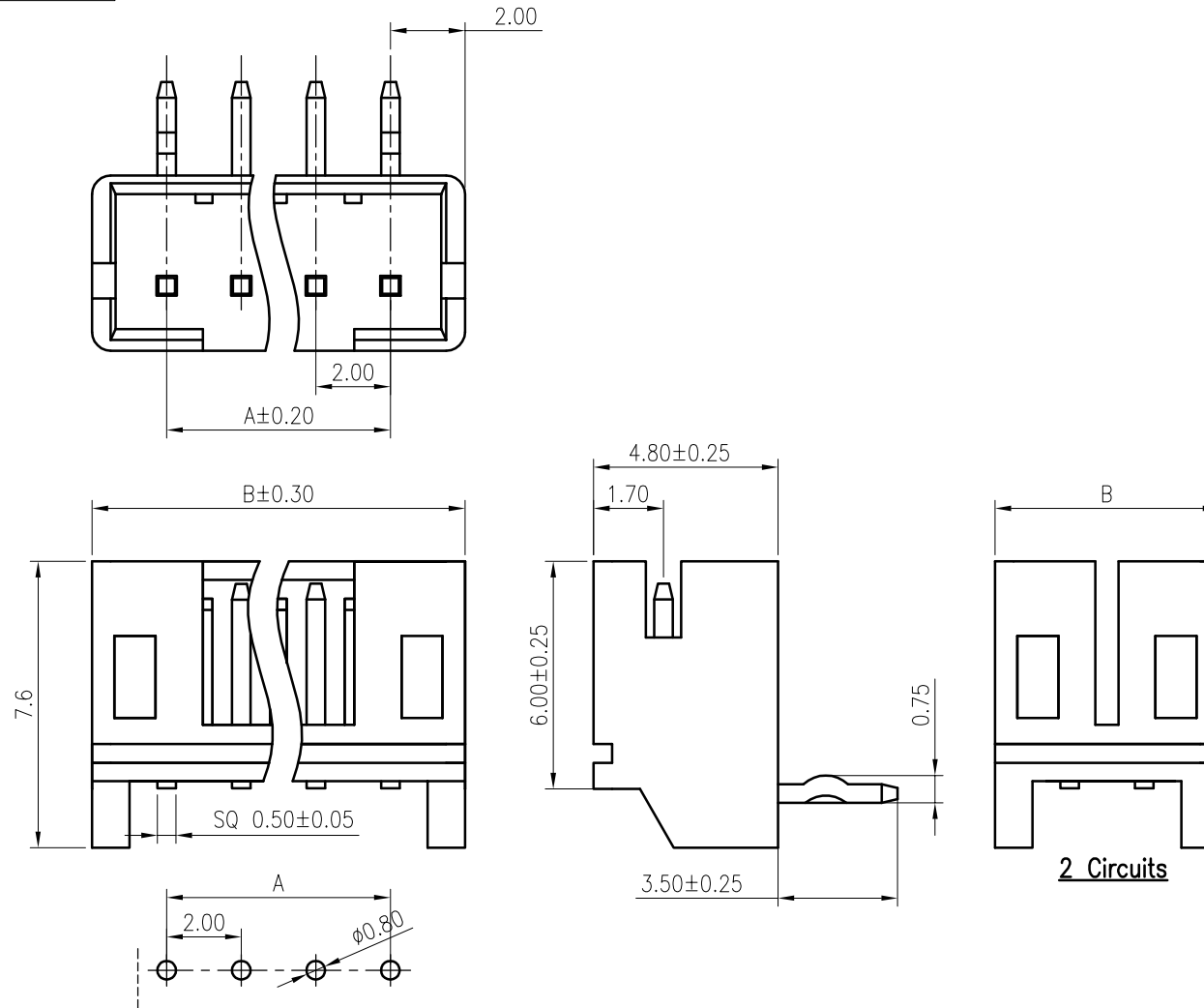


RoHS
COMPLIANT



Recommended P.C.B. Layout
Total tolerance: ±0.05mm

SPECIFICATIONS

1. Current rating: 2A AC, DC
2. Voltage rating: 100V AC, DC
3. Temperature range: -40°C ~ +105°C
4. Insulation resistance: 1000MΩ/ min.
5. Withstanding voltage: 800V AC/ minute.
6. Contact resistance: 20mΩ/ max.

Material:

Insulator: PA66 UL 94V-0
Contact: Brass/ Tin plated over Nickel
Mate with KR2001 series Housing

Ordering Code:

C2001RD *** 01 T01 01PB
 No. of Circuits } Plating
 102:2,116:16 } T01: Tin plated
 Insulator Material }
 01: PA66 White

Circuits	Dimensions		Circuits	Dimensions	
	A	B		A	B
2	2.00	6.00	10	18.00	22.00
3	4.00	8.00	11	20.00	24.00
4	6.00	10.00	12	22.00	26.00
5	8.00	12.00	13	24.00	28.00
6	10.00	14.00	14	26.00	30.00
7	12.00	16.00	15	28.00	32.00
8	14.00	18.00	16	30.00	34.00
9	16.00	20.00			

F					TOLERANCE X. X ±0.30 X. XX ±0.20 X. XXX ±0.10 Angle ±2°	TITLE: PH2.0 DIP 90° Wafer Have K	DRAWN: Arvin 2020.04.03 CHECKED: APPROVED:	KONNRA 东莞市康瑞电子有限公司 DongGuan Konnra Electronics Co., Ltd.			
		Change the part number and frame format	Arvin	2020.04.03							
	MARK	REVISION DESCRIPTION	SIGNATURE	DATE							
	1	2	3	4	UNIT: mm	SCALE: N/A	SHEET: 1/1	PROJECTION	REV.: A2	DRAWING NO.: 2001WRD101-B-S	