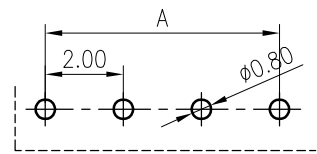
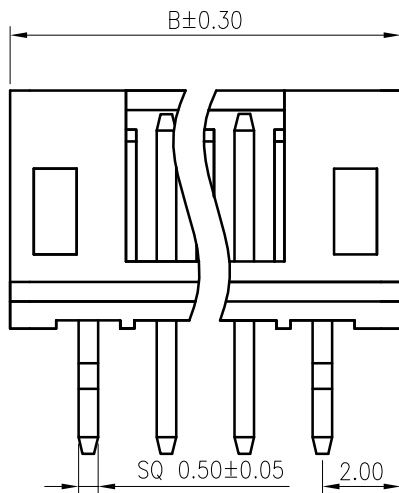
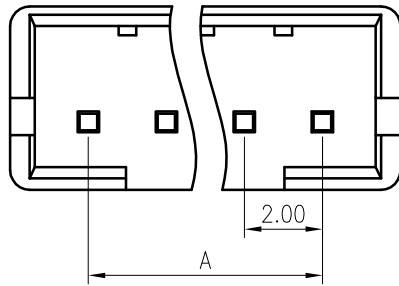
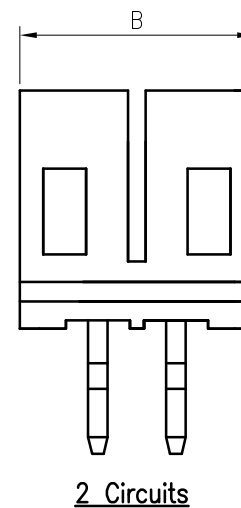
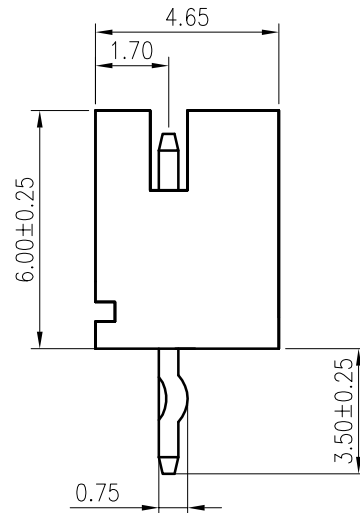


**RoHS**  
COMPLIANT



Recommended P.C.B. Layout  
Total tolerance:±0.05mm



**SPECIFICATIONS**

1. Current rating: 2A AC, DC
2. Voltage rating:100V AC,DC
3. Temperature range: -40°C ~ +105°C
4. Insulation resistance: 1000MΩ/ min.
5. Withstanding voltage: 800V AC/ minute.
6. Contact resistance: 20mΩ/ max.

**Material:**

Insulator: PA66 UL 94V-0  
Contact: Brass/ Tin plated over Nickel  
Mate with KR2001 series Housing

**Ordering Code:**

C2001VD \*\*\* 01 T01 01PB  
No.of Circuits } Plating  
102:2,116:16 } T01: Tin plated  
Insulator Material }  
01:PA66 White

Circuits	Dimensions		Circuits	Dimensions	
	A	B		A	B
2	2.00	6.00	10	18.00	22.00
3	4.00	8.00	11	20.00	24.00
4	6.00	10.00	12	22.00	26.00
5	8.00	12.00	13	24.00	28.00
6	10.00	14.00	14	26.00	30.00
7	12.00	16.00	15	28.00	32.00
8	14.00	18.00	16	30.00	34.00
9	16.00	20.00			



MARK

REVISION DESCRIPTION

SIGNATURE

DATE

**TOLERANCE**

X. X ±0.30  
X. XX ±0.20  
X. XXX ±0.10  
Angle ±2°

**TITLE:**  
PH2.0 DIP 180°  
Wafer Have K

UNIT: mm

SCALE: N/A

**DRAWN:** Arvin 2020.04.03

**CHECKED:**

**APPROVED:**

SHEET: 1/1

PROJECTION

**KONNRA** 东莞市康瑞电子有限公司  
DongGuan Konnra Electronics Co., Ltd.

PART NO. : C2001VD\*\*\*01T0101PB

REV. : A2

DRAWING NO. : 2001WDD101-B-S