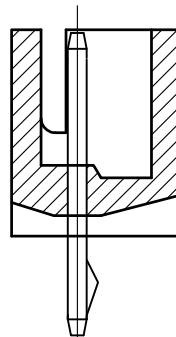
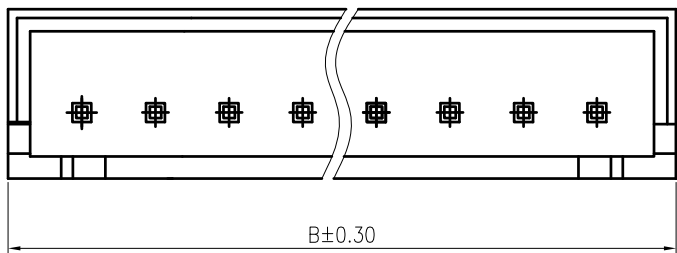
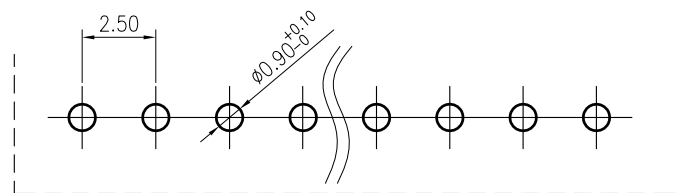
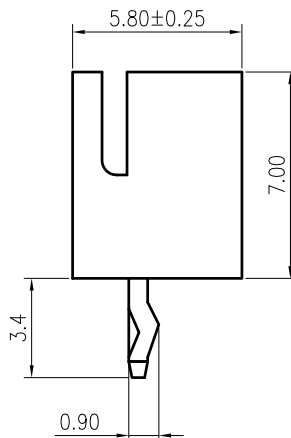
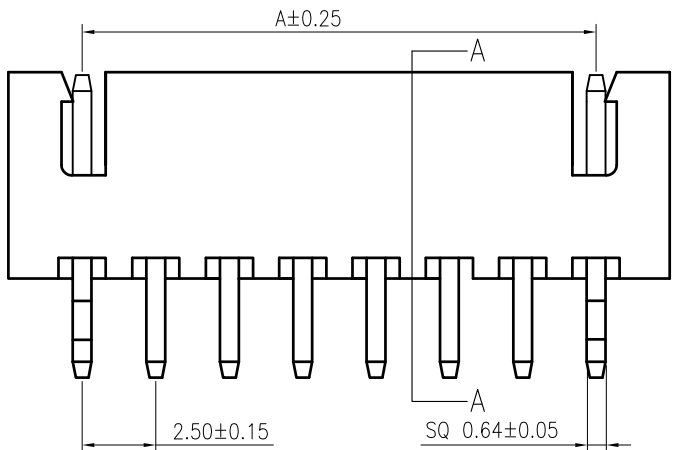


RoHS
COMPLIANT



SECTION A-A



Recommended P.C.B. Layout
Total tolerance:±0.05mm

SPECIFICATIONS

1. Current rating: 3A AC, DC
2. Voltage rating:250V AC,DC
3. Temperature range: -40°C ~ +105°C
4. Insulation resistance: 1000MΩ/ min.
5. Withstanding voltage: 1000V AC/ minute.
6. Contact resistance: 20mΩ/ max.

Material:

Insulator: PA66 UL94 V-0

Contact: Brass

Plating: Tin plated over Nickel

Mate with KR2501 series housing

Ordering Code:

C2501VD *** 01 T01 01PD

No.of Circuits

102:02,116:16

Insulator Material

01:PA66 White V0

Plating

T01: Tin plated

Circuits	Dimensions		Circuits	Dimensions	
	A	B		A	B
2	2.50	7.50	10	22.50	27.50
3	5.00	10.00	11	25.00	30.00
4	7.50	12.50	12	27.50	32.50
5	10.00	15.00	13	30.00	35.00
6	12.50	17.50	14	32.50	37.50
7	15.00	20.00	15	35.00	40.00
8	17.50	22.50	16	37.50	42.50
9	20.00	25.00			

TOLERANCE

X.X ±0.30

X.XX ±0.20

X.XXX ±0.10

Angle ±2°

TITLE:

XH2.5 DIP 180°

Wafer Have K

DRAWN: Shen 2022.01.13

CHECKED:

APPROVED:

KONNRA 东莞市康瑞电子有限公司

DongGuan Konnra Electronics Co.,Ltd.

PART NO.:C2501VD***01T0101PD

REV.:A3 DRAWING NO.:2501WVD101-D-S



Uniformly arrange the drawings

Shen

2022.01.13

MARK

REVISION DESCRIPTION

SIGNATURE

DATE

UNIT:mm

SCALE:N/A

SHEET:1/1

PROJECTION

REV.:A3

DRAWING NO.:2501WVD101-D-S

1

2

3

4

5

6

7

8

9