

RoHS
COMPLIANT

SPECIFICATIONS

1. Current rating: 3A AC, DC
2. Voltage rating: 250V AC,DC
3. Temperature range: -40°C ~ +105°C
4. Insulation resistance: 1000MΩ Min.
5. Withstanding voltage: 800V AC/ minute.
6. Contact resistance: 10mΩ Max.

Applicable Wires:

AWG#24~#28

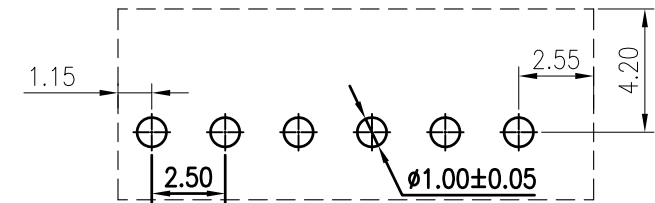
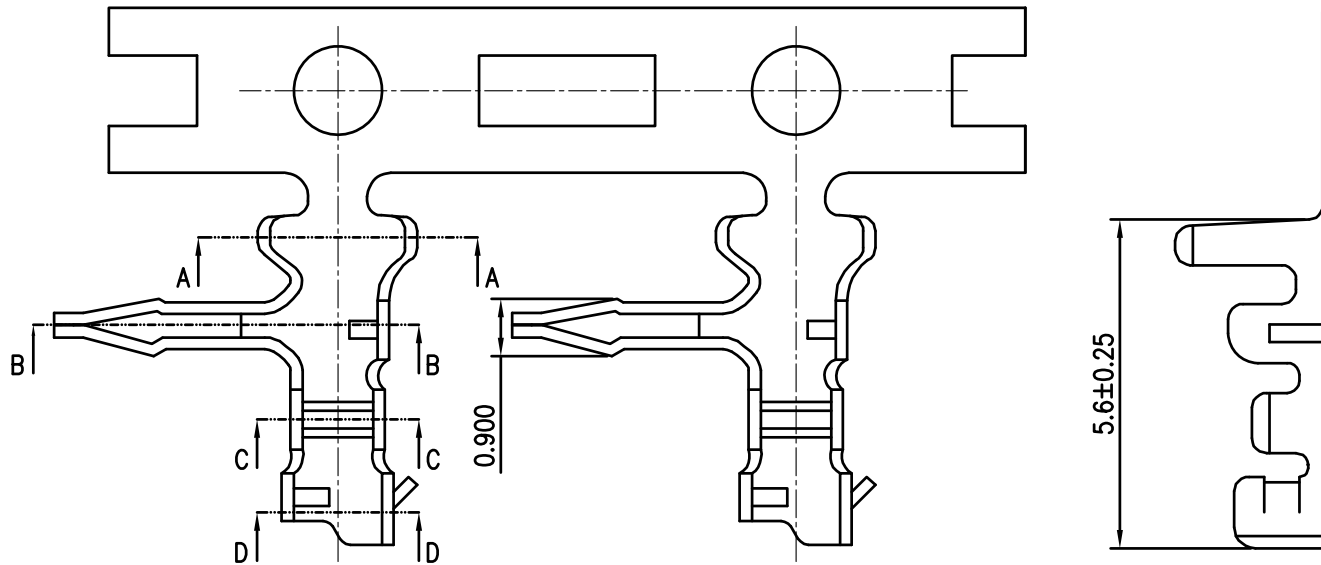
Insulation O.D. : 1.60mm MAX

Material: Phosphor bronze

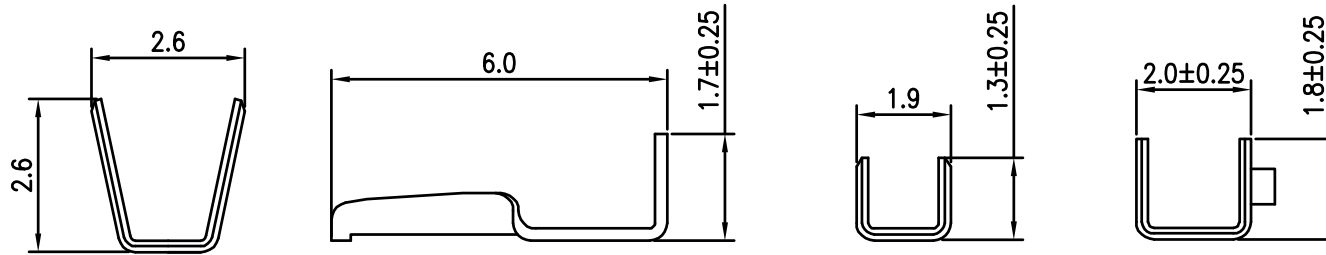
Plating: Tin plated over nickel

Suitable KR2508 series housing

Q'ty/reel: 10,000PCS



△3 Recommended P.C.Board Layout



SECTION A-A

SECTION B-B

SECTION C-C

SECTION D-D

TOLERANCE	
X.X	±0.30
X.XX	±0.20
X.XXX	±0.10
Angle	±2°

TITLE:	
SCN2.5 90° Terminal	
UNIT:mm	SCALE:N/A

DRAWN: Liujingtian 2020.5.06	
CHECKED:	
APPROVED:	
SHEET: 1/1	PROJECTION

KONNRA 东莞市康瑞电子有限公司 DongGuan Konnra Electronics Co.,Ltd.	
PART NO.: T2508RPT0101C	
REV.: A3	DRAWING NO.: 2508TR101-C-S

	Uniformly arrange the drawings	Arvin	2020.10.30
MARK	REVISION DESCRIPTION	SIGNATURE	DATE
1			
2			