



**RoHS**  
COMPLIANT

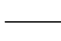
**SPECIFICATIONS**

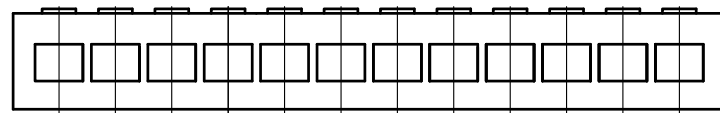
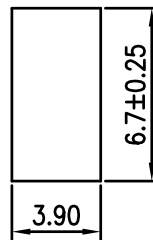
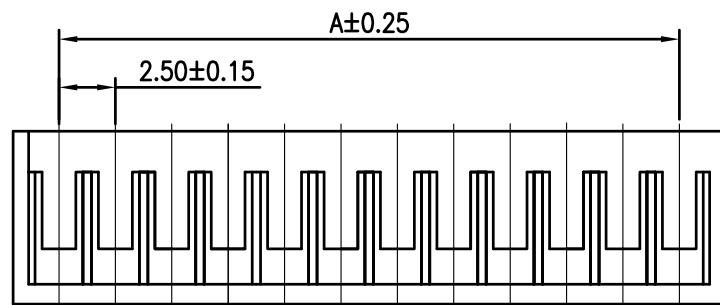
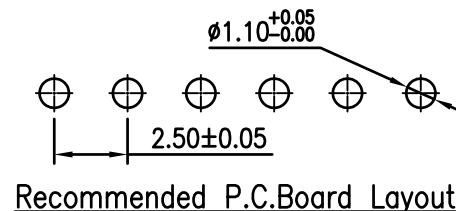
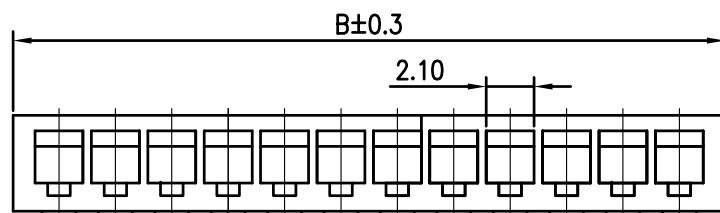
1. Current rating: 3A AC, DC
2. Voltage rating: 250V AC,DC
3. Temperature range: -40°C ~ +105°C
4. Insulation resistance: 1000MΩ Min.
5. Withstanding voltage: 800V AC/ minute.
6. Contact resistance: 10mΩ Max.

Material: Nylon 66 UL 94V-0  
Suitable KR2508 series terminal  
Mate with KR2508 series wafer  
Ordering Code:

 H2508V \*\*\* 01 01B

No.of Circuits   
102:2,116:16

Insulator Material   
01:PA66 White V0



Circuits	Dimensions	
	A	B
2	2.50	6.50
3	5.00	9.00
4	7.50	11.50
5	10.00	14.00
6	12.50	16.50
7	15.00	19.00
8	17.50	21.50
9	20.00	24.00
10	22.50	26.50
11	25.00	29.00
12	27.50	31.50
13	30.00	34.00
14	32.50	36.50
15	35.00	39.00
15	37.50	41.50

TOLERANCE  
X.X ±0.30  
X.XX ±0.20  
X.XXX ±0.10  
Angle ±2°

TITLE:  
SCN2.5 180°  
Housing

DRAWN: Liujingtian 2020.5.06

CHECKED:

APPROVED:

**KONNRA** 东莞市康瑞电子有限公司  
DongGuan Konnra Electronics Co.,Ltd.

PART NO.: H2508V\*\*\*0101B

MARK

REVISION DESCRIPTION

SIGNATURE

DATE

UNIT:mm SCALE:N/A

SHEET:1/1

PROJECTION 

REV.:A2

DRAWING NO.: 2508HV101-B-S

1

2

3

4

5

6

7

8


9

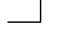
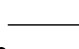
**RoHS**  
COMPLIANT

**SPECIFICATIONS**

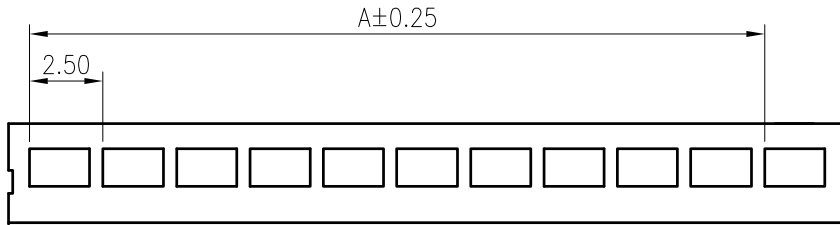
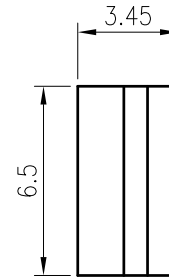
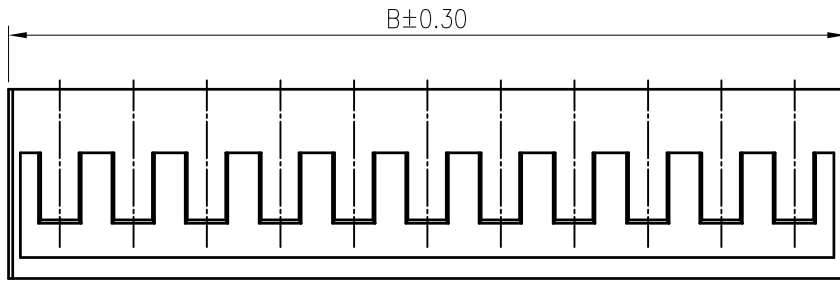
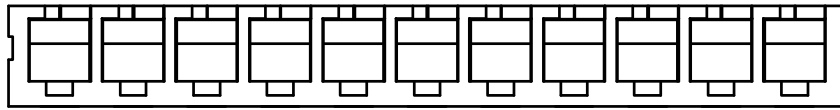
1. Current rating: 3A AC, DC
2. Voltage rating: 250V AC,DC
3. Temperature range: -40°C ~ +105°C
4. Insulation resistance: 1000MΩ Min.
5. Withstanding voltage: 800V AC/ minute.
6. Contact resistance: 10mΩ Max.




Material: Nylon 66 UL 94V-0  
 Suitable KR2508 series terminal  
 Mate with KR2508 series wafer  
 Ordering Code:

 H2508R \*\*\* 01 \*\*B

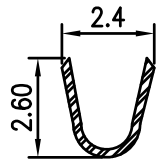
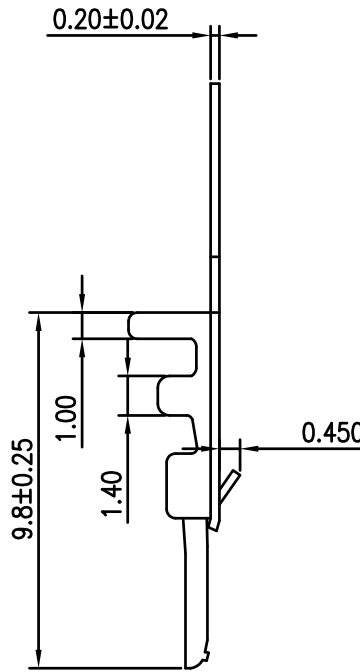
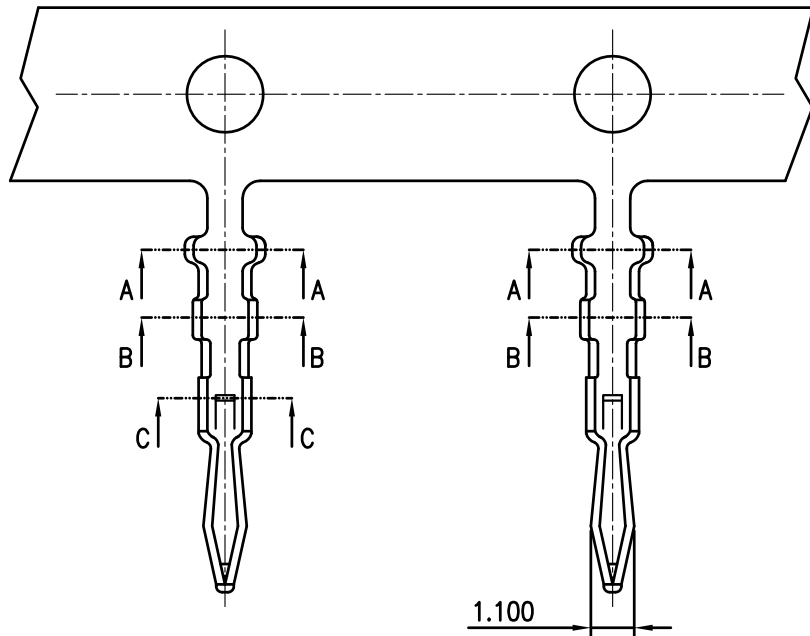
No. of Circuits  102:2,116:16  
 Insulator Material  00:HF  
 01:PA66 White V0 01:Standard

Circuits	Dimensions	
	A	B
2	2.50	6.00
3	5.00	8.50
4	7.50	11.00
5	10.00	13.50
6	12.50	16.00
7	15.00	18.50
8	17.50	21.00
9	20.00	23.50
10	22.50	26.00
11	25.00	28.50
12	27.50	31.00
13	30.00	33.50
14	32.50	36.00
15	35.00	38.50
15	37.50	41.00

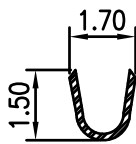


F					TOLERANCE	TITLE:	DRAWN:	KONNRA 东莞市康瑞电子有限公司 DongGuan Konnra Electronics Co.,Ltd.	
		Uniformly arrange the drawings	LJT	2020.05.06	X.X ±0.30 X.XX ±0.20 X.XXX ±0.10 Angle ±2°	SCN2.5 90° Housing	Arwin 2020.10.30		
MARK	REVISION DESCRIPTION	SIGNATURE	DATE	UNIT:mm	SCALE:N/A	SHEET:1/1	PROJECTION 	REV.:A2	DRAWING NO.:2508HR101-B-S

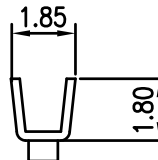
**RoHS**  
COMPLIANT



SECTION A-A



SECTION B-B



SECTION C-C

**SPECIFICATIONS**

1. Current rating: 3A AC, DC
2. Voltage rating: 250V AC,DC
3. Temperature range:  $-40^{\circ}\text{C} \sim +105^{\circ}\text{C}$
4. Insulation resistance: 1000M $\Omega$  Min.
5. Withstanding voltage: 800V AC/ minute.
6. Contact resistance: 10m $\Omega$  Max.

**Applicable Wires:**

AWG#24~#28

Insulation O.D. : 1.60mm MAX

Material: Brass

Plating: Tin plated over nickel

Suitable KR2508 series housing

Q'ty/reel: 10,000PCS

TOLERANCE
X.X $\pm 0.30$
X.XX $\pm 0.20$
X.XXX $\pm 0.10$
Angle $\pm 2^{\circ}$

TITLE:  
**SCN2.5 180°  
Terminal**

DRAWN: Liujingtian 2020.5.06  
CHECKED:  
APPROVED:

**KONNRA** 东莞市康瑞电子有限公司  
DongGuan Konnra Electronics Co.,Ltd.  
PART NO.: T2508VBT0101C

MARK	REVISION DESCRIPTION	SIGNATURE	DATE
A3	Uniformly arrange the drawings	LJT	2020.05.06

UNIT:mm SCALE:N/A SHEET:1/1 PROJECTION

REV.:A2 DRAWING NO.:2508TV101-C-S

**RoHS**  
COMPLIANT

**SPECIFICATIONS**

1. Current rating: 3A AC, DC
2. Voltage rating: 250V AC,DC
3. Temperature range: -40°C ~ +105°C
4. Insulation resistance: 1000MΩ Min.
5. Withstanding voltage: 800V AC/ minute.
6. Contact resistance: 10mΩ Max.

**Applicable Wires:**

AWG#24~#28

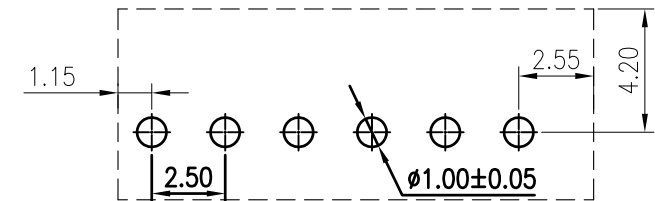
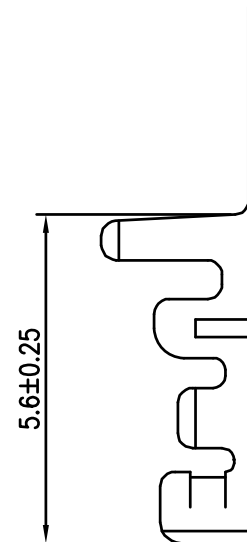
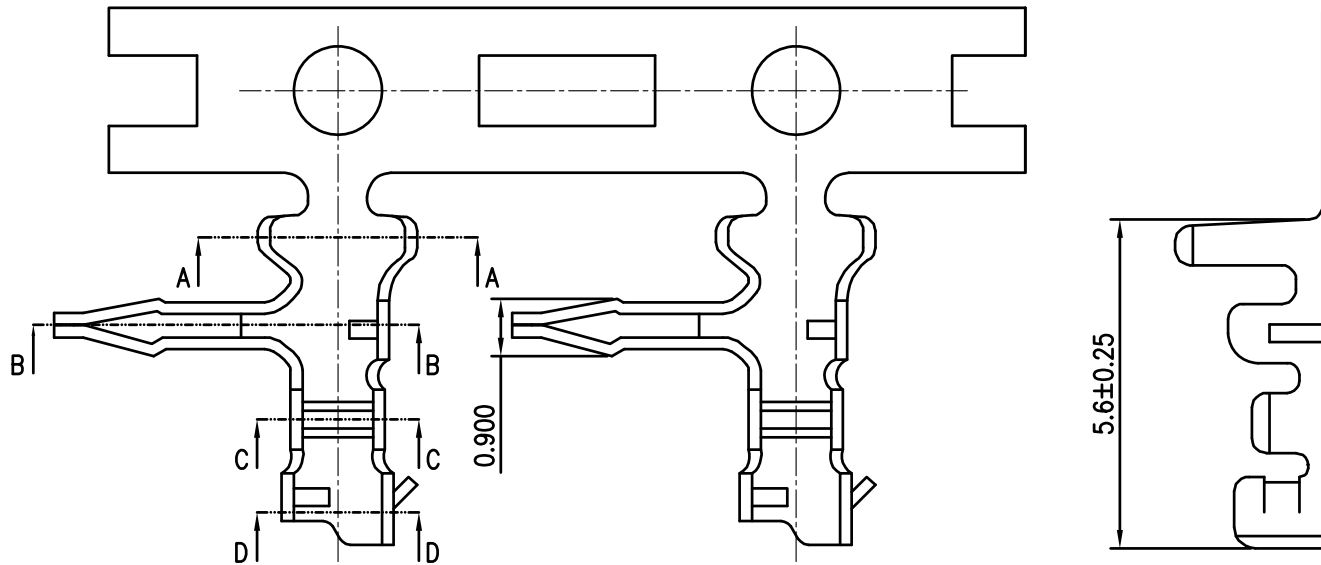
Insulation O.D. : 1.60mm MAX

Material: Phosphor bronze

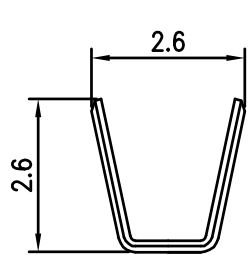
Plating: Tin plated over nickel

Suitable KR2508 series housing

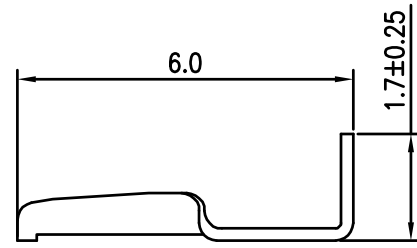
Q'ty/reel: 10,000PCS



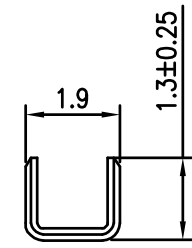
**△3 Recommended P.C.Board Layout**



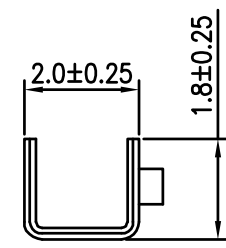
SECTION A-A



SECTION B-B



SECTION C-C



SECTION D-D

TOLERANCE
X.X ±0.30
X.XX ±0.20
X.XXX ±0.10
Angle ±2°

TITLE:	SCN2.5 90° Terminal
UNIT:mm	SCALE:N/A

DRAWN: Liujingtian 2020.5.06
CHECKED:
APPROVED:
SHEET: 1/1
PROJECTION

<b>KONNRA</b> 东莞市康瑞电子有限公司 DongGuan Konnra Electronics Co.,Ltd.
PART NO.: T2508RPT0101C
REV.: A3 DRAWING NO.: 2508TR101-C-S

	Uniformly arrange the drawings	Arvin	2020.10.30
MARK	REVISION DESCRIPTION	SIGNATURE	DATE
1			
2			