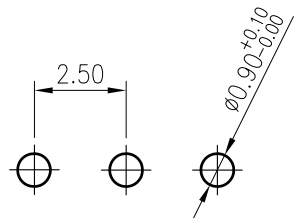
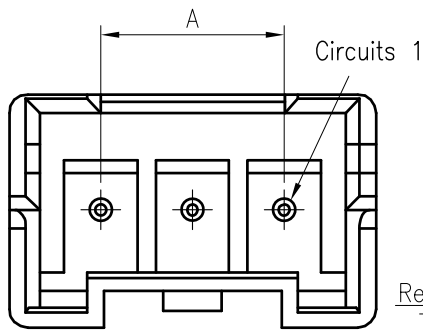


**RoHS**  
COMPLIANT



Recommended P.C.B. Layout  
Total tolerance:  $\pm 0.05\text{mm}$

Ordering Code:

C2516VD \*\*\* 19 T01 01PA

No. of Circuits

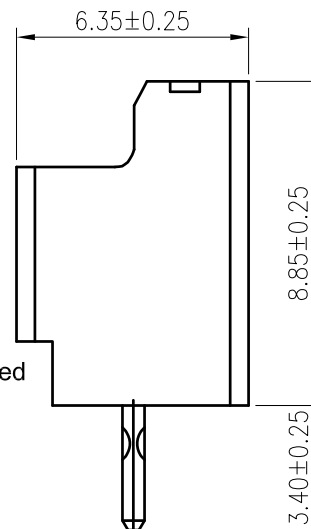
102:02, 115:15

Insulator Material

19: PA66 Grey V0

Plating

T01: Tin plated



**SPECIFICATIONS**

1. Current rating: 3A AC, DC
2. Voltage rating: 250V AC, DC
3. Temperature range:  $-40^{\circ}\text{C} \sim +105^{\circ}\text{C}$
4. Insulation resistance:  $1000\text{M}\Omega/\text{min}$ .
5. Withstanding voltage: 1000V AC/ minute.
6. Contact resistance:  $10\text{m}\Omega/\text{max}$ .

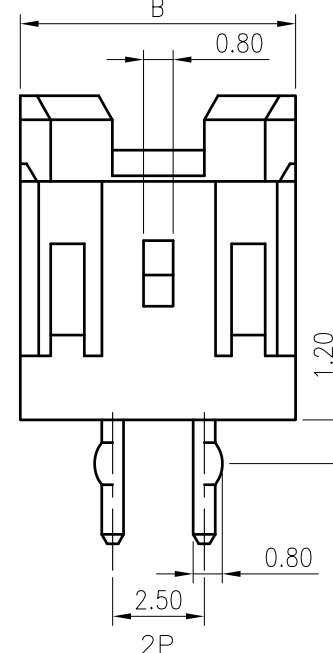
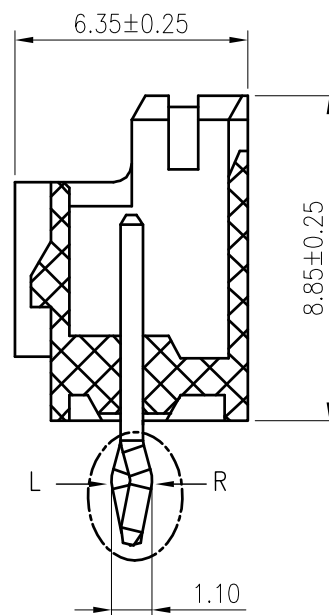
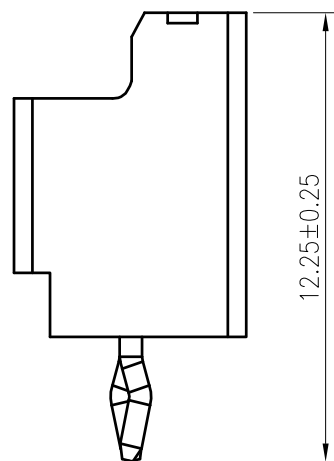
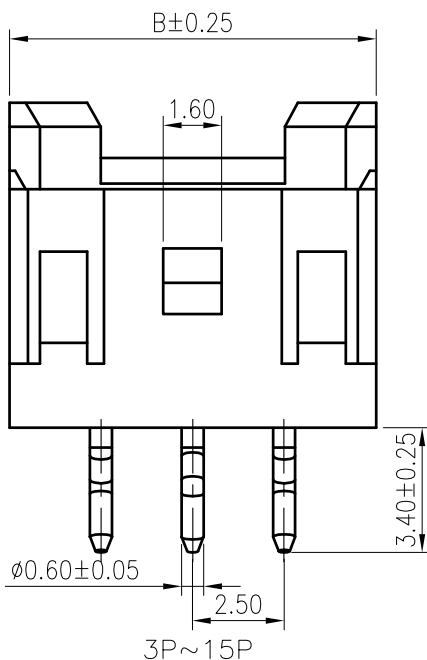
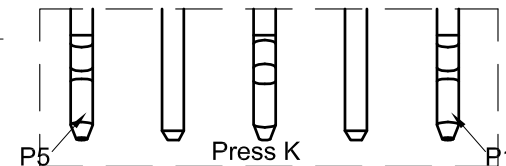
**Material:**

Insulator: PA66 UL 94V-0

Contact: Brass

Plating: Tin plated over Nickel

Mate with KR2516 Series Housing



Circuits	Dimension		Press K	
	A	B	R	L
2	--	7.50	---	---
3	5.00	10.00	P1,P3	P2
4	7.50	12.50	P1,P4	P2
5	10.00	15.00	P1,P5	P3
6	12.50	17.50	P1,P6	P3
7	15.00	20.00	P1,P7	P4
8	17.50	22.50	P1,P8	P4
9	20.00	25.00	P1,P9	P5
10	22.50	27.50	P1,P10	P5
11	25.00	30.00	P1,P11	P6
12	27.50	32.50	P1,P12	P6
13	30.00	35.00	P1,P13	P7
14	32.50	37.50	P1,P14	P7
15	35.00	40.00	P1,P15	P8

**TOLERANCE**

X.X  $\pm 0.30$

X.XX  $\pm 0.20$

X.XXX  $\pm 0.10$

Angle  $\pm 2^{\circ}$

**TITLE:**

XA2.5 DIP 180°

Wafer

DRAWN: *Arwin 2020.07.16*

CHECKED:

APPROVED:

**KONNRA** 东莞市康瑞电子有限公司

DongGuan Konnra Electronics Co., Ltd.

PART NO.: C2516VD\*\*\*19T0101PA



Uniformly arrange the drawings

Shen

2022.01.13

MARK

REVISION DESCRIPTION

SIGNATURE

DATE

UNIT: mm

SCALE: N/A

SHEET: 1/1

PROJECTION

REV.: A4

DRAWING NO.: 2516WVD101-A-S

1

2

3

4

5

6

7

8

9