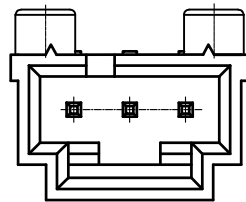
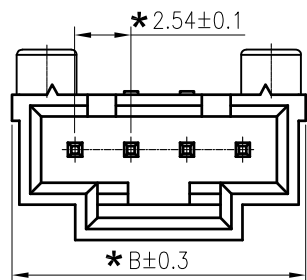
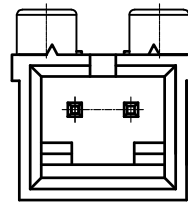


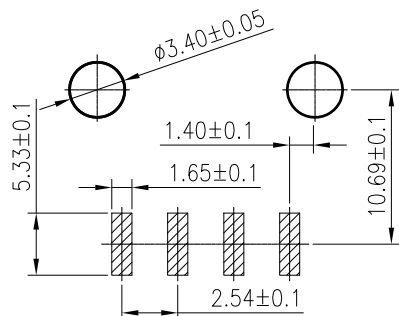
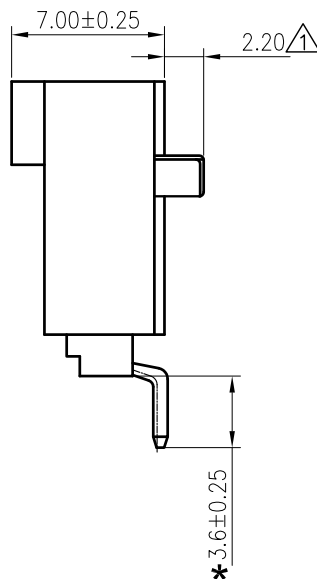
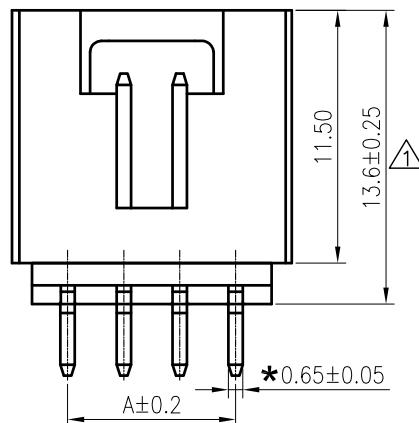
RoHS
COMPLIANT



△ 3 Circuit



△ 2 Circuit



Recommended P.C.Board Layout

SPECIFICATIONS

1. Current rating: 3A AC, DC
2. Voltage rating: 250V AC,DC
3. Temperature range: -40°C ~ +105°C
4. Insulation resistance: 1000MΩ Min.
5. Withstanding voltage: 1500V AC/ minute.
6. Contact resistance: 20mΩ Max.

Material:

Insulator: PA9T UL 94V-0
 Contact: Brass
 Plating: Gold flash plated over Nickel
 Mate with KR2541 series Housing
 Ordering Code:

C2541RS *** 12 G0101 R A

No.of Circuits
 102:2,112:12

Packing
 R:Reel&Tape
 T:Tube
 P:Bag

Circuits	Dimensions	
	A	B
2	2.54	8.89
3	5.08	11.43
4	7.62	13.97
5	10.16	16.51
6	12.70	19.05
7	15.24	21.59
8	17.78	24.13
9	20.32	26.67
10	22.86	29.21
11	25.40	31.75
12	27.94	34.29

TOLERANCE
 X.X ±0.30
 X.XX ±0.20
 X.XXX ±0.10
 Angle ±2°

TITLE:
 MX2.54 SMT 90°
 Ultra-thin Wafer
 Triangular Column

DRAWN: Liujingtian 2020.5.13

CHECKED:

APPROVED:

UNIT:mm SCALE:N/A

SHEET:1/1

PROJECTION

KONNRA 东莞市康瑞电子有限公司
 DongGuan Konnra Electronics Co.,Ltd.

PART NO.:C2541RS***12G0101*A

REV.:A2 DRAWING NO.:2541WRS101-A-S



MARK