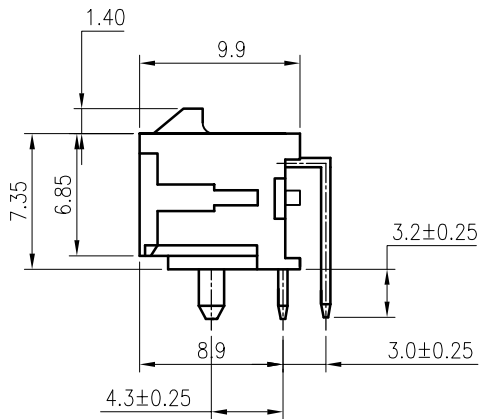
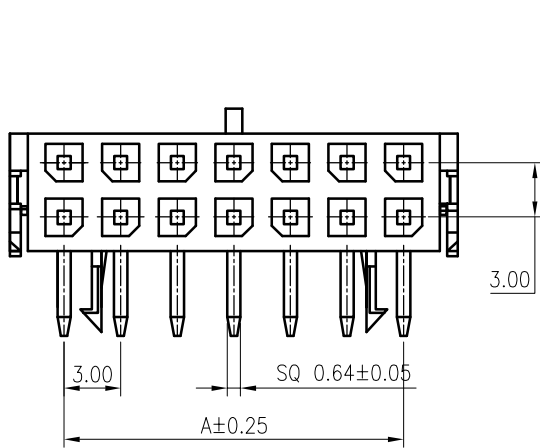


RoHS
COMPLIANT



SPECIFICATIONS

1. Current rating: 5A AC, DC
2. Voltage rating: 250V AC,DC
3. Temperature range: -40°C ~ +105°C
4. Insulation resistance: 1000MΩ Min.
5. Withstanding voltage: 1500V AC/ minute.
6. Contact resistance: 10mΩ Max.

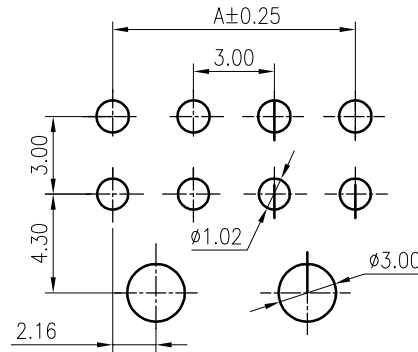
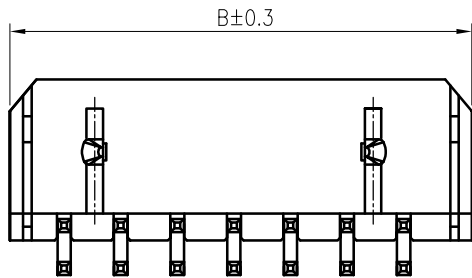
Material:

Insulator: PA46 UL 94V-0
 Contact: Brass
 Plating: Tin plated or gold flash over nickel
 Circuits: 2*1~2*12
 Mate with KR3000 series dual row housing

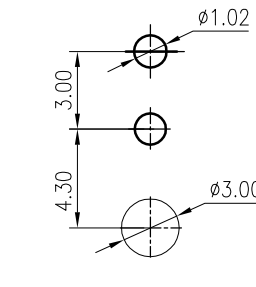
Ordering Code:

△A C3000RD *** ** T01 01 R A

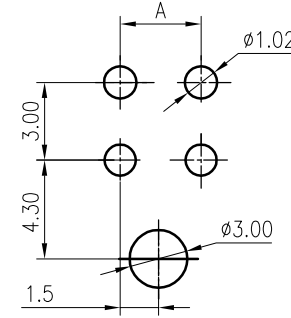
No. of Circuits: 202:2x1P, 202:2x2P.....
 Insulator Material: 08:PA46 Black
 Packing: R: Reel Tape, P: Bag, B: Box
 T01: Tin plated, G01: Gold flash



2*4P~2*12P P.C.B Layout



2*1P P.C.B Layout



2*2P~2*3P P.C.B Layout

PIN NO.	DIMENSIONS	
	A	B
2*1P	--	6.65
2*2P	3.00	9.65
2*3P	6.00	12.65
2*4P	9.00	15.65
2*5P	12.00	18.65
2*6P	15.00	21.65
2*7P	18.00	24.65
2*8P	21.00	27.65
2*9P	24.00	30.65
2*10P	27.00	33.65
2*11P	30.00	36.65
2*12P	33.00	39.65

F	△A4				TOLERANCE	TITLE:	DRAWN: ru yi 2020.03.10	KONNRA 东莞市康瑞电子有限公司 DongGuan Konnra Electronics Co., Ltd.			
	△A3	Uniformly arrange the drawings	Arvin	2021.09.24	X. X ±0.30	MK3.0 DIP 90° Wafer	CHECKED:				
	△A2	Change the part number and frame format	Ru yi	2020.3.10	X. XX ±0.20	Dual Row	APPROVED:	PART NO. : C3000RD2**08***01*A			
	MARK	REVISION DESCRIPTION	SIGNATURE	DATE	X. XXX ±0.10	Angle ±2°	UNIT: mm	SCALE: N/A	SHEET: 1/1	PROJECTION	REV. : A3