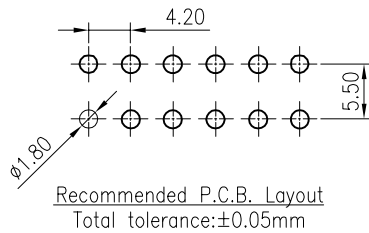
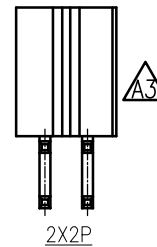
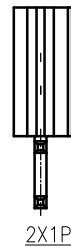
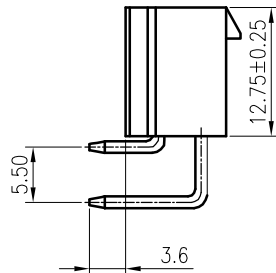
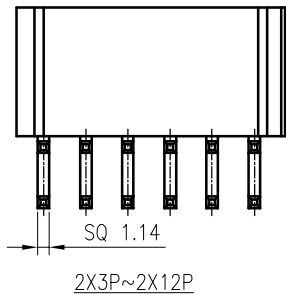
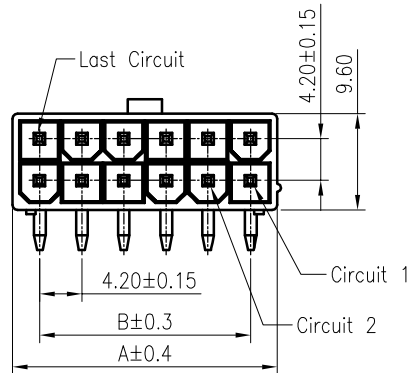


RoHS
COMPLIANT



SPECIFICATIONS

1. Current rating: 9A(2P AWG#16) AC, DC
2. Voltage rating:600V AC,DC
3. Temperature range: -40°C ~ +105°C
4. Insulation resistance: 1000MΩ/ min.
5. Withstanding voltage: 1500V AC/ minute.
6. Contact resistance: 10mΩ/ max.

Material:

Insulator: Nylon 66 UL94 V-2 or V-0
 Contact: Brass
 Plating: Tin plated over Nickel
 Mate with KR4200 series double row male housing

Ordering Code:

C4200RD *** ** T0101 * C
 No. of Circuits }
 202:2x1,212:2x12 } Packing
 Insulator Material } P:Bag
 01:PA66 White V0 } B:Box
 02:PA66 Black V0
 16:PA66 Transparent V2

Circuits	Dimensions		Circuits	Dimensions	
	A	B		A	B
2x1	5.40	/	2x7	30.60	25.20
2x2	9.60	4.20	2x8	34.80	29.40
2x3	13.80	8.40	2x9	39.00	33.60
2x4	18.00	12.60	2x10	43.20	37.80
2x5	22.20	16.80	2x11	47.40	42.00
2x6	26.40	21.00	2x12	51.60	46.20

TOLERANCE

X. X ±0.30
 X. XX ±0.20
 X. XXX ±0.10
 Angle ±2°

TITLE:
 MX4.2 Double Row
 90°Wafer Solid
 needle without post

DRAWN: Arvin 2020.04.30

CHECKED:

APPROVED:

KONNRA 东莞市康瑞电子有限公司
 DongGuan Konnra Electronics Co., Ltd.

PART NO. : C4200RD*16T0101*C**

MARK REVISION DESCRIPTION SIGNATURE DATE UNIT: mm SCALE: N/A SHEET: 1/1 PROJECTION REV. : A4 DRAWING NO. : 4200WRD201-C-S

1 2 3 4 5 6 7 8 9